



# GAT MONTHLY MEMBERSHIP PROGRESS REPORT

Results as of: 6/30/2023

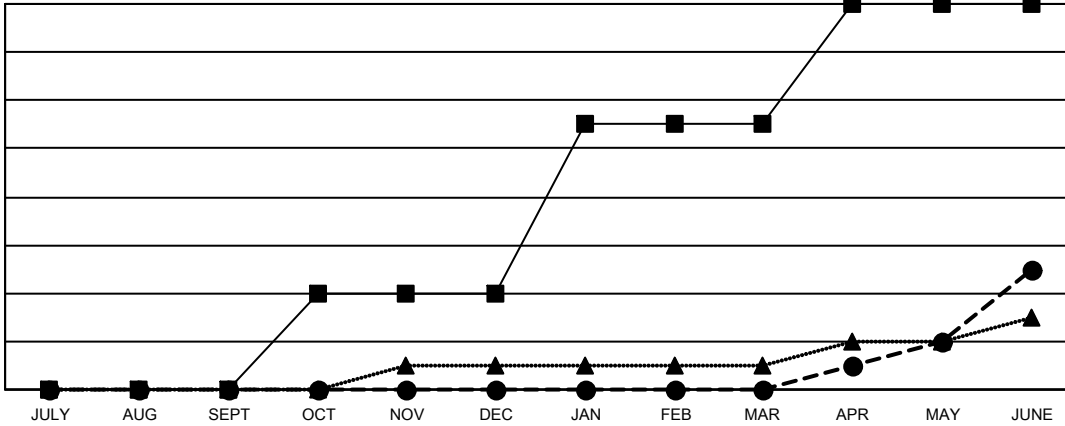
Multiple District 5M

LOCATION: MINNESOTA

Clubs			
RESULTS FOR 2022-2023			
QUARTER	NEW CLUB GOAL	NEW CLUBS	DROPPED CLUBS
JULY/AUG/SEPT	0	0	4
OCT/NOV/DEC	4	0	1
JAN/FEB/MAR	7	0	4
APR/MAY/JUNE	5	5	6

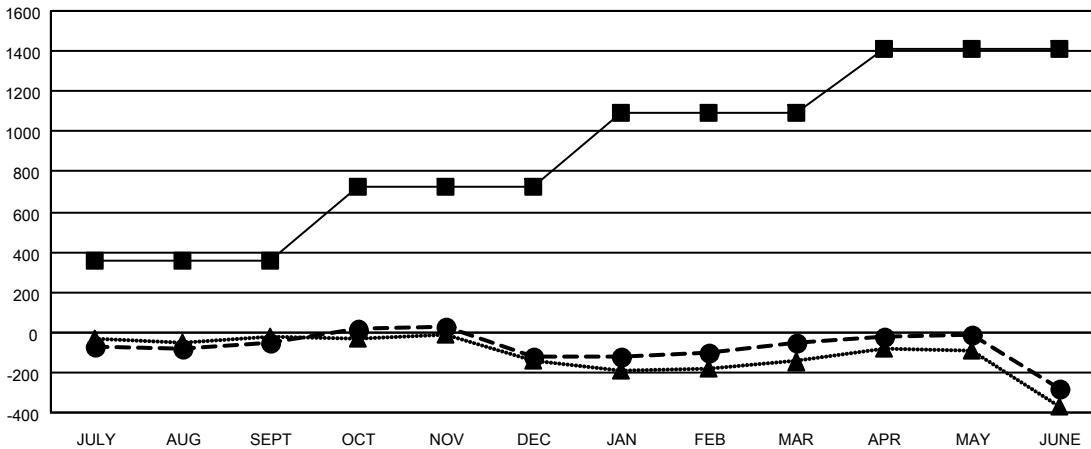
Members			
RESULTS FOR 2022-2023			
QUARTER	MEMBER GROWTH NET GOAL	MEMBER GROWTH ACTUAL	DROPPED MEMBERS ACTUAL (including transfers)
JULY/AUG/SEPT	360	458	436
OCT/NOV/DEC	365	453	490
JAN/FEB/MAR	367	439	344
APR/MAY/JUNE	323	639	799

GOALS AND ACTUAL NEW CLUBS CUMULATIVE



- - CURRENT YEAR GOALS FOR NEW CLUBS
- - CURRENT YEAR ACTUAL NEW CLUBS
- ▲ - LAST YEAR ACTUAL NEW CLUBS

GOALS AND ACTUAL MEMBERS CUMULATIVE



- - MEMBER GROWTH NET GOAL
- - MEMBER GROWTH ACTUAL
- ▲ - LAST YEAR MEMBERSHIP ACTUAL

DROPPED CLUBS: 15	
<b>DROPPED MEMBERS</b>	
DECEASED	272
CLUB CANCELLED	53
OTHER	1,746
<b>TOTAL</b>	<b>2,071</b>

433 CLUBS OF 622 ADDED 1 OR MORE NEW MEMBERS

[CLICK HERE FOR CUMULATIVE MEMBERSHIP DATA](#)

GENDER DISTRIBUTION	
MALE	12,617 (66.62%)
FEMALE	6,316 (33.35%)
NON BINARY	0 (0.00%)
PREFER NOT TO ANSWER	7 (0.04%)
<b>TOTAL FAMILY UNIT MEMBERS</b>	<b>3,997</b>
<b>FAMILY MEMBERS PAYING HALF DUES</b>	<b>2,030</b>